

NERI Seminar Series, Roskilde

Autumn 2002

1 October

Climate reconstruction during the MWP in the Baltic Sea from biogeochemical proxies in a sediment record

Joachim Dippner
Baltic Sea Research Institute Warnemuende (IOW), Germany

Host: Christoph Heinze, Department of Marine Ecology

15 October

Use of ecotoxicological and chemical measurements to assess qualities of complex sediment systems

Wolfgang Ahlf
Department of Environmental Science and Technology,
Technical University Hamburg-Harburg, Germany

Host: Philipp Mayer, Department of Environmental Chemistry
and Microbiology

22 October

Spectroscopic investigations of CDOM in the Gulf of Mexico

Paula G. Coble
College of Marine Science, University of South Florida, USA

Host: Stiig Markager, Department of Marine Ecology

5 November

Representing marine biogenic particle fluxes in biogeochemical models

Iris Kriest
Max Planck Institute of Meteorology, Hamburg, Germany

Host: Christoph Heinze, Department of Marine Ecology

6 November (note time 10:00-12:00)

Fennel Pondweed as migratory fuel for Bewick's Swans

Marcel Klassen
Research Department, Netherlands Institute of Ecology
(NIOO), The Netherlands

Host: Jesper Madsen, Department of Arctic Environment

19 November

Atmosfærisk transport af persistent organisk forurening

Kaj Mantzius Hansen
Department of Atmospheric Environment, NERI

Host: Jørgen Brandt, Department of Atmospheric Environment

10 December

Use of isotope-based methods for studying microbial degradation of environmental pollutants

Peter Roslev
University of Aalborg

Host: Katrin Vorkamp, Department of Environmental
Chemistry and Microbiology

17 December

Geografisk fordeling af emissioner

Jytte Boll Illerup
Henning Sten Hansen

Department of Policy Analysis, NERI

Host: Lene Olsen, Department of Policy Analysis

Further information can be obtained by contacting Alf Josefsen
at tel. +45 4630 1200 or the Host of the scheduled seminar.
Changes to the seminar schedule will be announced at
<http://www.dmu.dk/>

All seminars begin at 14:00
and take place in the "Pavillon" at NERI, Roskilde.

National Environmental Research Institute (NERI)
Frederiksborgvej 399 • DK-4000 Roskilde
Tel: +45 4630 1200

NERI Seminar Series, Roskilde
Autumn 2002

1 October

Climate reconstruction during the MWP in the Baltic Sea from biogeochemical proxies in a sediment record

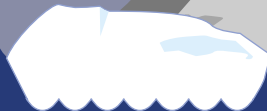
Joachim Dippner

Baltic Sea Research Institute Warnemuende (IOW),
Germany

*Host: Christoph Heinze,
Department of Marine Ecology*

Further information can be obtained by contacting Alf Josefson
at tel. +45 4630 1200 or the Host of the scheduled seminar.
Changes to the seminar schedule will be announced at
<http://www.dmu.dk/>
All seminars begin at 14:00
and take place in the "Pavillon" at NERI, Roskilde.

National Environmental Research Institute (NERI)
Frederiksborgvej 399 • DK-4000 Roskilde
Tel: +45 4630 1200



NERI Seminar Series, Roskilde
Autumn 2002

15 October

Use of ecotoxicological and chemical measurements to assess qualities of complex sediment systems

Wolfgang Ahlf

Department of Environmental Science and Technology,
Technical University Hamburg-Harburg, Germany

*Host: Philipp Mayer, Department of Environmental Chemistry
and Microbiology*

Further information can be obtained by contacting Alf Josefson
at tel. +45 4630 1200 or the Host of the scheduled seminar.
Changes to the seminar schedule will be announced at
<http://www.dmu.dk/>
All seminars begin at 14:00
and take place in the "Pavillon" at NERI, Roskilde.

National Environmental Research Institute (NERI)
Frederiksborgvej 399 • DK-4000 Roskilde
Tel: +45 4630 1200



NERI Seminar Series, Roskilde
Autumn 2002

22 October

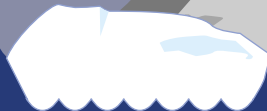
Spectroscopic investigations of CDOM in the Gulf of Mexico

Paula G. Coble
College of Marine Science,
University of South Florida, USA

Host: Stig Markager, Department of Marine Ecology

Further information can be obtained by contacting Alf Josefsen
at tel. +45 4630 1200 or the Host of the scheduled seminar.
Changes to the seminar schedule will be announced at
<http://www.dmu.dk/>
All seminars begin at 14:00
and take place in the "Pavillon" at NERI, Roskilde.

National Environmental Research Institute (NERI)
Frederiksborgvej 399 • DK-4000 Roskilde
Tel: +45 4630 1200



NERI Seminar Series, Roskilde
Autumn 2002

5 November

Representing marine biogenic particle fluxes in biogeochemical models

Iris Kriest

Max Planck Institute of Meteorology,
Hamburg, Germany

Host: Christoph Heinze, Department of Marine Ecology

Further information can be obtained by contacting Alf Josefson
at tel. +45 4630 1200 or the Host of the scheduled seminar.
Changes to the seminar schedule will be announced at
<http://www.dmu.dk/>
All seminars begin at 14:00
and take place in the "Pavillon" at NERI, Roskilde.

National Environmental Research Institute (NERI)
Frederiksborgvej 399 • DK-4000 Roskilde
Tel: +45 4630 1200



NERI Seminar Series, Roskilde
Autumn 2002

6 November

(note kl 10:00-12:00)

Fennel Pondweed as migratory fuel for Bewick's Swans

Marcel Klassen

Research Department, Netherlands Institute of Ecology
(NIOO), The Netherlands

*Host: Jesper Madsen,
Department of Arctic Environment*

Further information can be obtained by contacting Alf Josefsen
at tel. +45 4630 1200 or the Host of the scheduled seminar.
Changes to the seminar schedule will be announced at
<http://www.dmu.dk/>
All seminars begin at 14:00
and take place in the "Pavillon" at NERI, Roskilde.

National Environmental Research Institute (NERI)
Frederiksborgvej 399 • DK-4000 Roskilde
Tel: +45 4630 1200



NERI Seminar Series, Roskilde
Autumn 2002

19 November

Atmosfærisk transport af persistent organisk forurening

Kaj Mantzius Hansen

Department of Atmospheric Environment, NERI

Host: Jørgen Brandt,

Department of Atmospheric Environment

Further information can be obtained by contacting Alf Josefson
at tel. +45 4630 1200 or the Host of the scheduled seminar.
Changes to the seminar schedule will be announced at
<http://www.dmu.dk/>
All seminars begin at 14:00
and take place in the "Pavillon" at NERI, Roskilde.

National Environmental Research Institute (NERI)
Frederiksborgvej 399 • DK-4000 Roskilde
Tel: +45 4630 1200



NERI Seminar Series, Roskilde **Autumn 2002**

19 November

Kaj Mantzius Hansen
ATMI

Persistent organisk forurening (Engelsk: Persistent Organic Pollutants - POP) er skadelige stoffer som akkumuleres op gennem fødekæden og som er svært nedbrydelige i miljøet.

Eksempler på POPer er pesticider som DDT og Lindan og industrielle produkter som PCB.

POPer fordamper let til atmosfæren i varme egne på mellembreddegrader og har potentiale til at blive transporteret langt fra deres kildeområder.

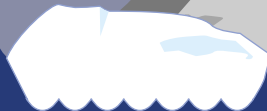
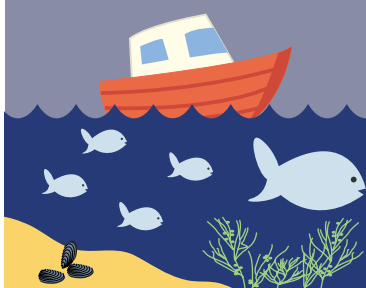
I kølige egne kondenserer POPerne, og de har svært ved at fordampe og forlade regionen igen. På den måde sker der en ophobning af POPer i de kolde arktiske egne hvor de kan gøre stor skade på det sårbare miljø.

Atmosfæren er den primære transportvej for POPer til Arktis.

En forståelse af de atmosfæriske processer (emission, transport, diffusion, kemisk omdannelse og deposition) er derfor vigtig for at kunne beskrive POPernes skæbne. Dette kan gøres ved at inkludere POPer i en atmosfærisk transportmodel for den nordlige halvkugle, som er under udvikling i ATMI. De underliggende processer i modellen vil blive skitseret, og de foreløbige modelresultater blive præsenteret.

Further information can be obtained by contacting Alf Josefson at tel. +45 4630 1200 or the Host of the scheduled seminar. Changes to the seminar schedule will be announced at <http://www.dmu.dk/> All seminars begin at 14:00 and take place in the "Pavillon" at NERI, Roskilde.

National Environmental Research Institute (NERI)
Frederiksborgvej 399 • DK-4000 Roskilde
Tel: +45 4630 1200



NERI Seminar Series, Roskilde
Autumn 2002

10 December

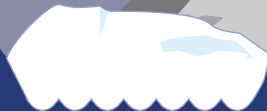
Use of isotope-based methods for studying microbial degradation of environmental pollutants

Peter Roslev
University of Aalborg

*Host: Katrin Vorkamp, Department of Environmental
Chemistry and Microbiology*

Further information can be obtained by contacting Alf Josefson
at tel. +45 4630 1200 or the Host of the scheduled seminar.
Changes to the seminar schedule will be announced at
<http://www.dmu.dk/>
All seminars begin at 14:00
and take place in the "Pavillon" at NERI, Roskilde.

National Environmental Research Institute (NERI)
Frederiksborgvej 399 • DK-4000 Roskilde
Tel: +45 4630 1200



NERI Seminar Series, Roskilde
Autumn 2002

17 December

Geografisk fordeling af emissioner

Jytte Boll Illerup

Henning Sten Hansen

Department of Policy Analysis, NERI

Host: Lene Olsen, Department of Policy Analysis

Further information can be obtained by contacting Alf Josefson
at tel. +45 4630 1200 or the Host of the scheduled seminar.
Changes to the seminar schedule will be announced at
<http://www.dmu.dk/>
All seminars begin at 14:00
and take place in the "Pavillon" at NERI, Roskilde.

National Environmental Research Institute (NERI)
Frederiksborgvej 399 • DK-4000 Roskilde
Tel: +45 4630 1200

